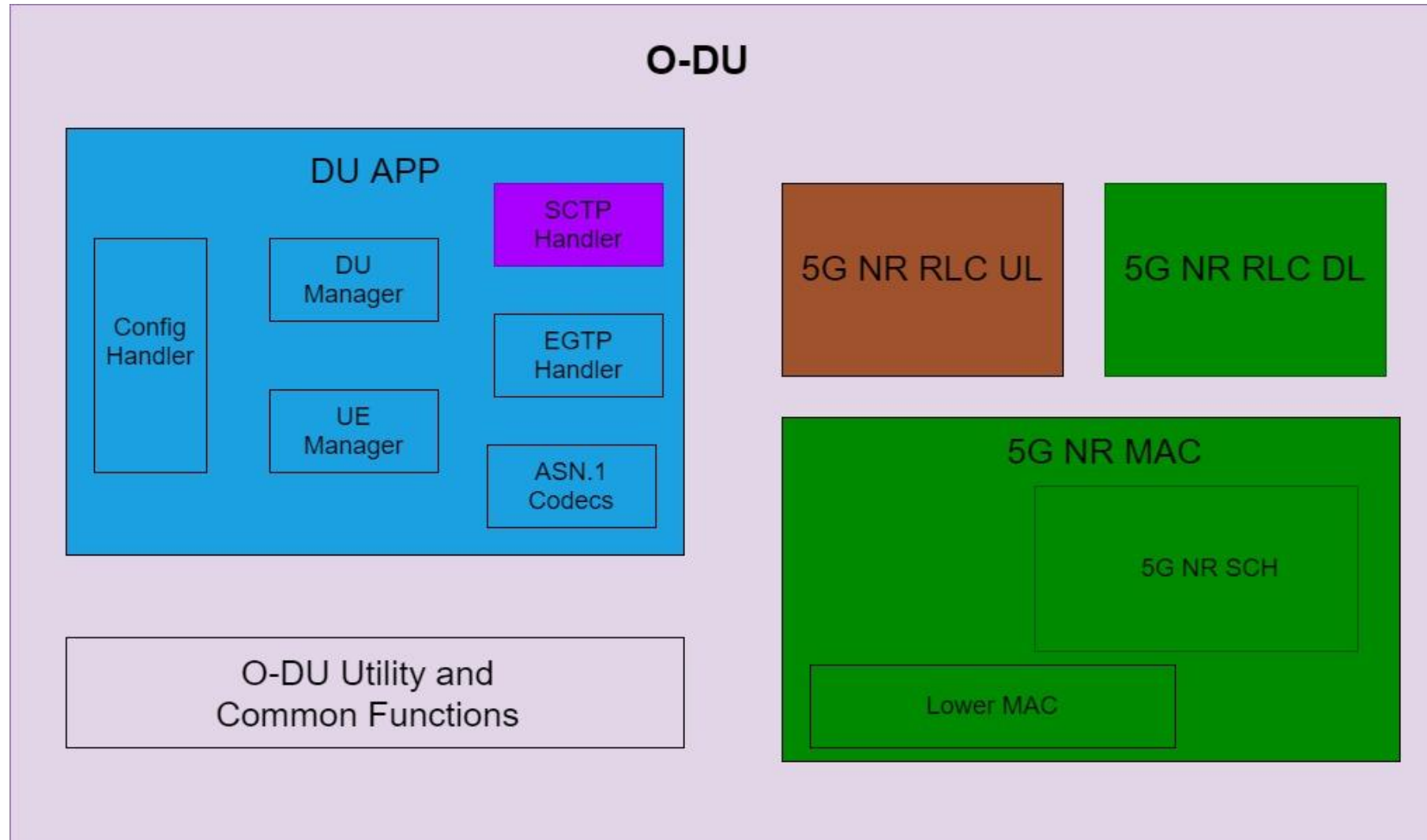


O-DU High Sprint 1 Demo

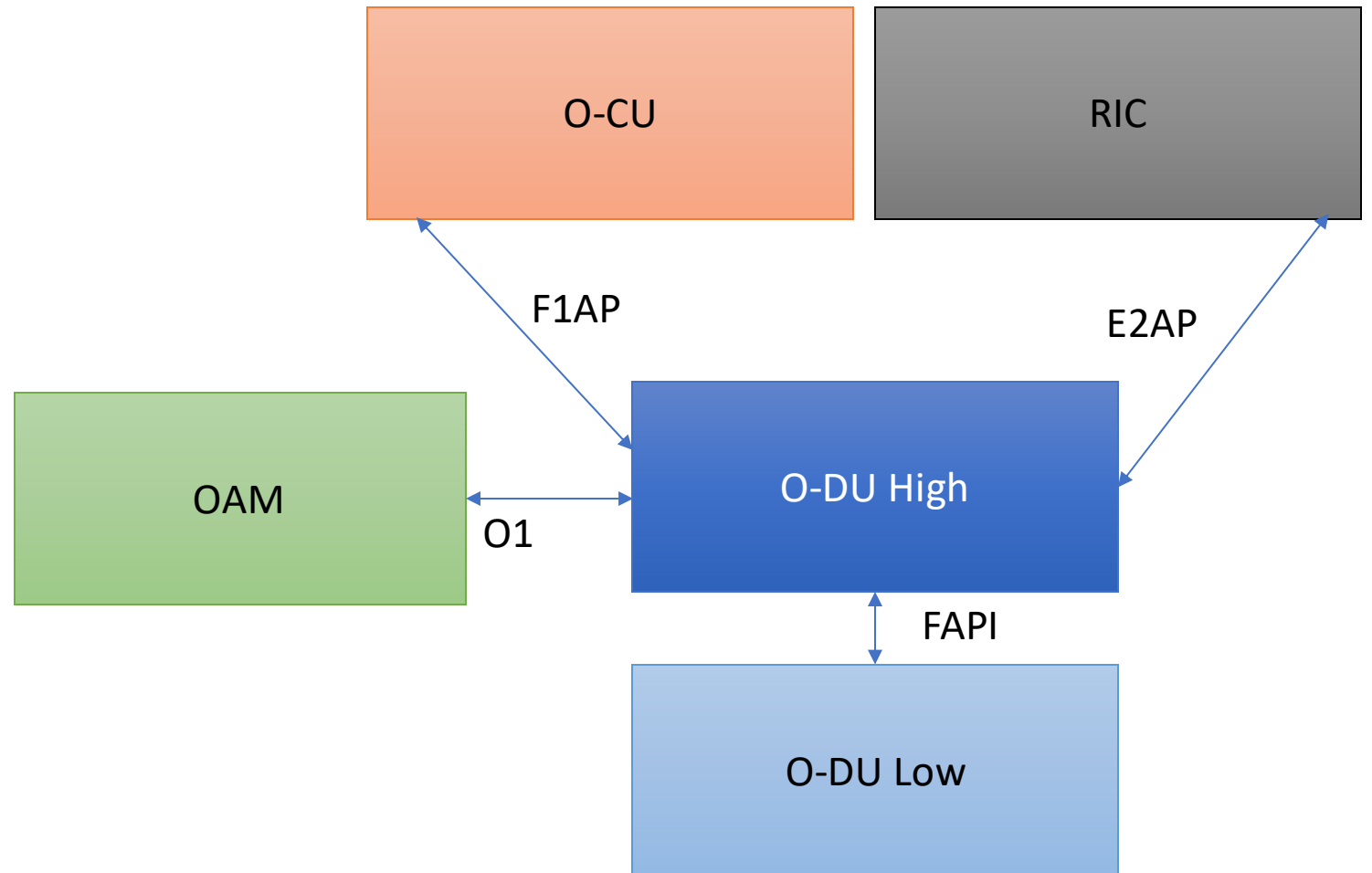
O-DU High Architecture



O-DU High Sprint 1 Demo

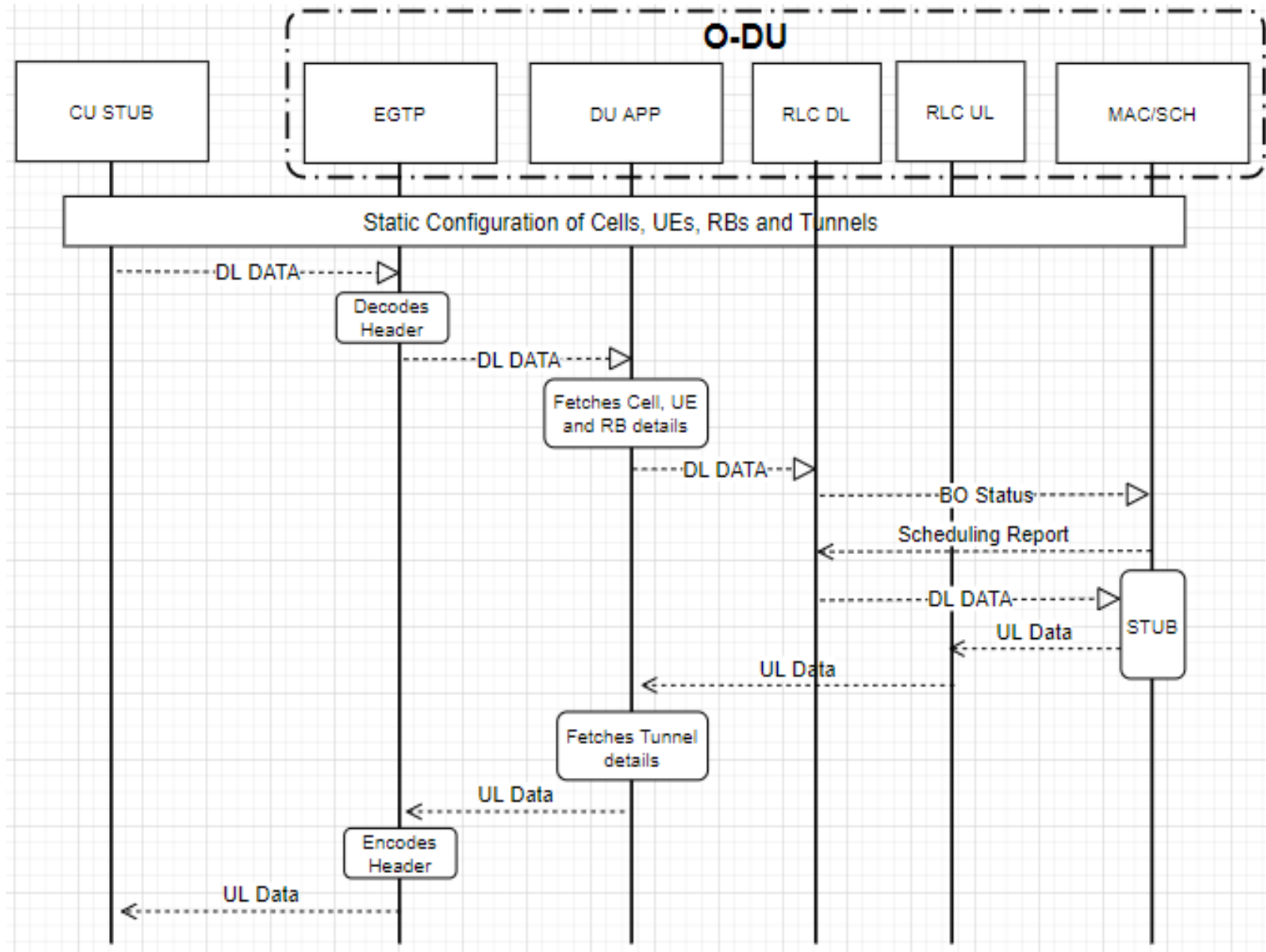
F1-C interface
demonstration of
following messages:

- F1AP Setup Request
- F1AP Setup Response
- GND DU Configuration Update
- GNB DU Configuration Update Ack



O-DU High Sprint 2 Demo

F1-U Data path flow

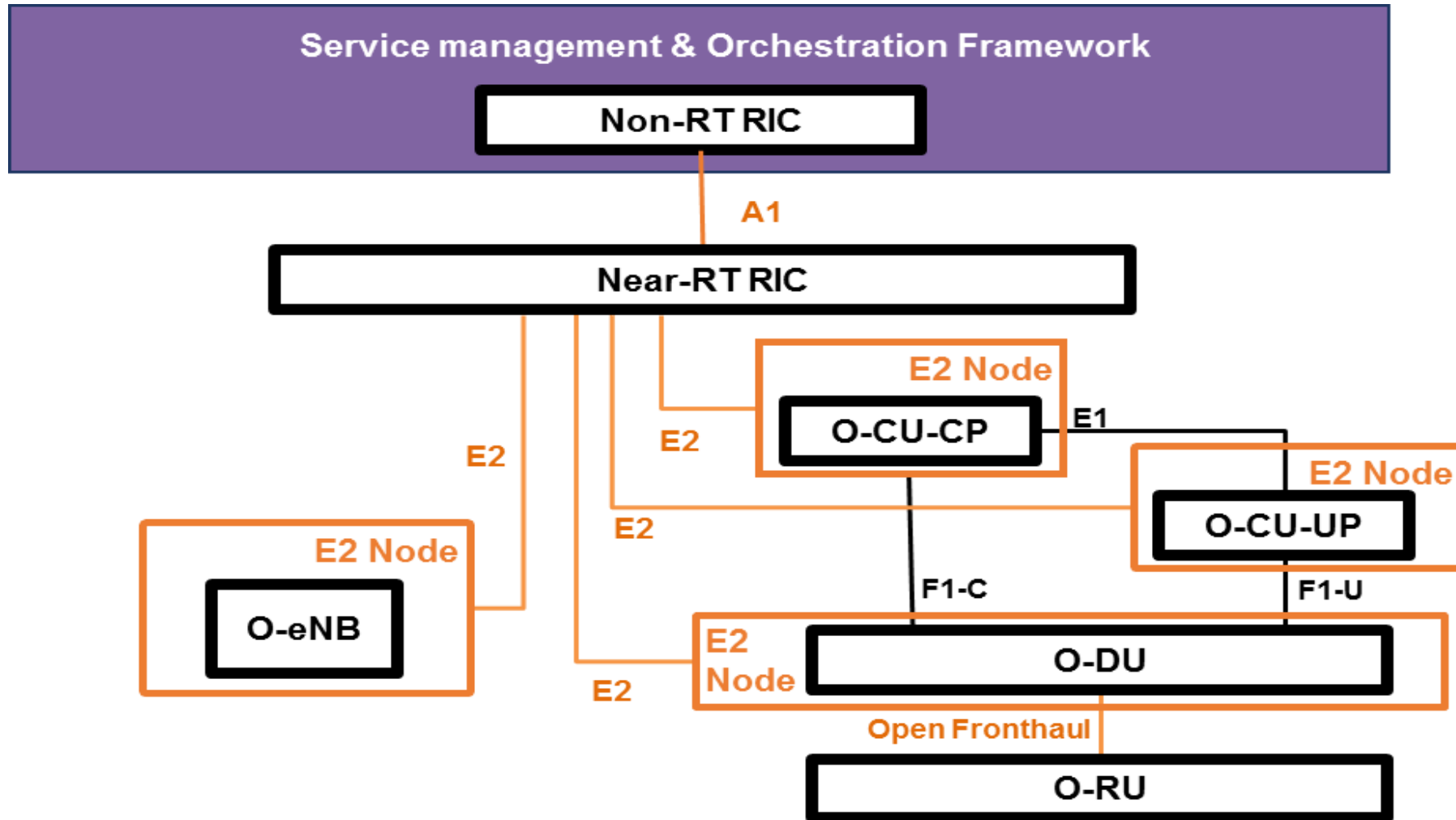


Limitations

- UE, RB and tunnel configurations are static
- DL data path ends at MAC Stub
- UL data is triggered from MAC Stub
- UL Data is pumped from stub only when a DL data received
- SDU segmentation/reassembly at RLC is not presented in this demo

O-DU High Sprint 3 Demo

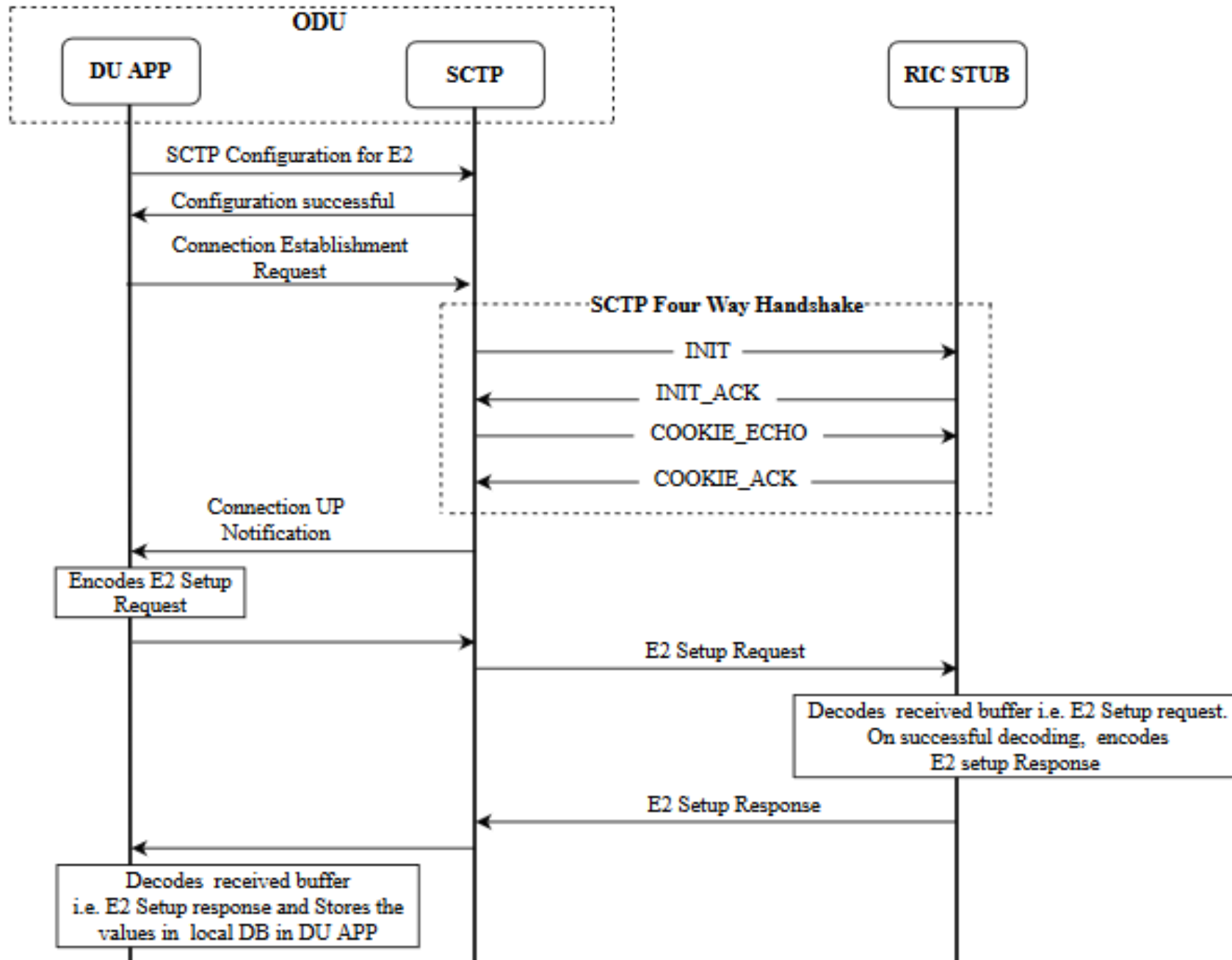
O-RAN Architecture Overview with Near-RT RIC interfaces



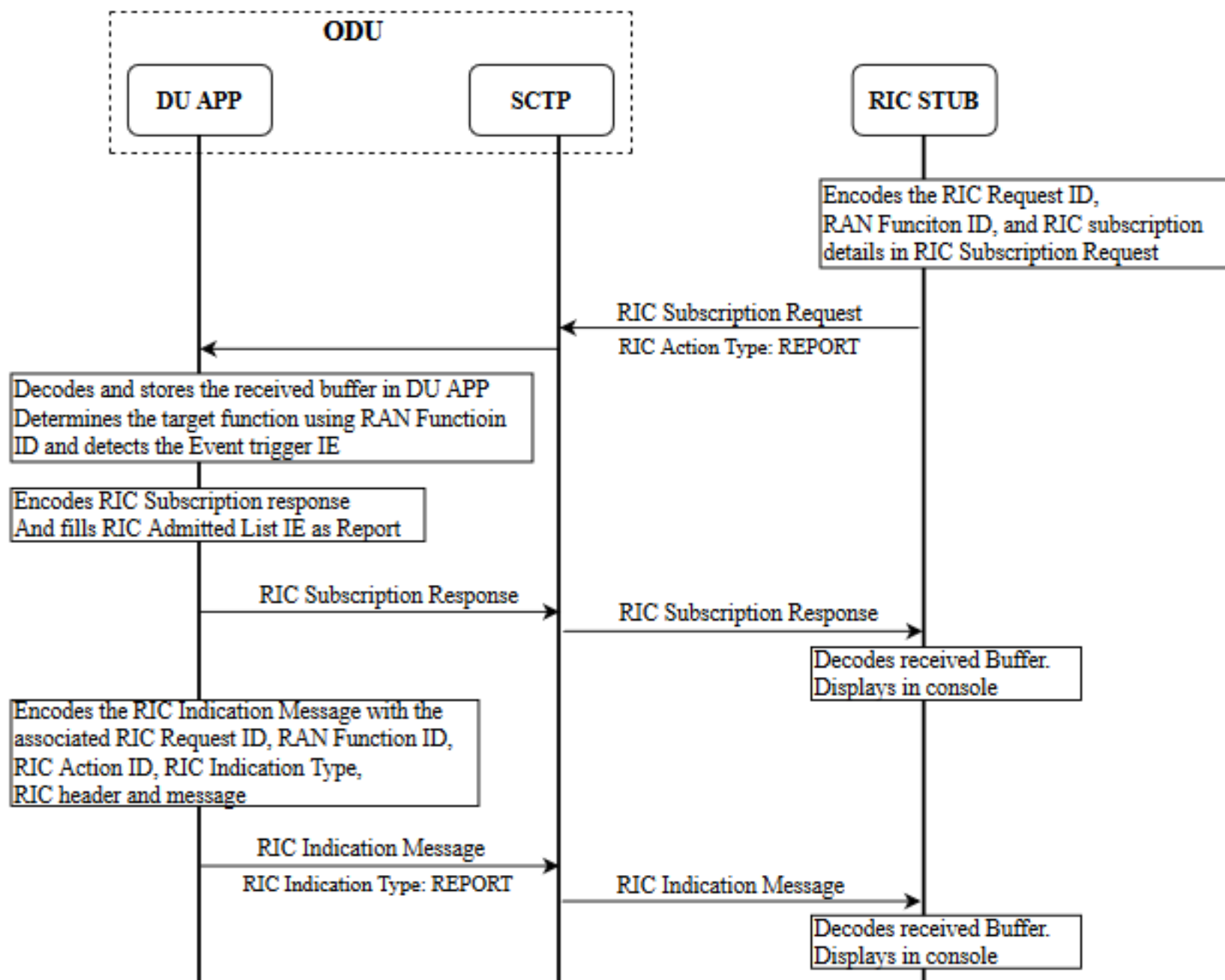
Scope of Demo

- E2 initialization between O-DU and Near RT RIC
 - SCTP four - way handshake
 - E2 Setup Request
 - E2 Setup Response
- Traffic Steering Use-case
 - RIC Subscription Request
 - RIC Subscription Response
 - RIC Indication Message

E2 Initialization



Traffic Steering Use Case



Open Items

1. Port 38482 is being used for E2 interface since this has not been specified.
2. Implementation of only Report RIC Action Type is supported, as per Traffic Steering Use-case.
3. Content of below IEs are not clear in specification:
 - Section 9.2.6, RIC event Trigger definition
 - Section 9.2.16, RIC indication Header
 - Section 9.2.17, RIC Indication Message

Spec versions:

ORAN-WG3.E2AP-v01.00

ORAN-WG3.E2SM-v01.00

4. Support for periodic reports missing, due to lack of clarity in E2 spec.
5. KPIs reported in RIC indication message are mocked and do not reflect actual values.
6. Disector is not available to show the E2 protocol in wireshark.

Thank You