

# Reject Connection Setup Requests Design

## Requirements

The purpose of this feature is to get parameters with enableRic from client and to save it as json in GenericParameters table in Rnib.

According to enableRic value e2mgr will reject/accept incoming setup request.

## E2Mgr Set Parameter Request

This is a new Generic API to update e2mgr Parameters through the REST API.

Once the e2mgr received the "Set Parameter" request it should save value in GeneralConfiguration table in RNIB DB .

<b>Resource</b>	Resource for this interface  /v#/nodeb/parameters
<b>Description</b>	E2 Manager is requested to set some Parameter
<b>HTTP Method</b>	PUT
<b>Supported Representation Formats</b>	Request: Request Format ie application/json, none, etc Response: Response Format ie application/json, none, etc
<b>Successful HTTP Response Code</b>	200 OK

```
PUT http://<serverBaseURL>/v#/nodeb/parameters
```

Parameter	Data Type	Description
enableRic	Boolean	true meaning - Future Setup from RAN will be supported false meaning - Future Setup from RAN will be rejected

```
PUT http://localhost:3800/v1/nodeb/parameters
accept: application/json

{
  "enableRic": true
}
```

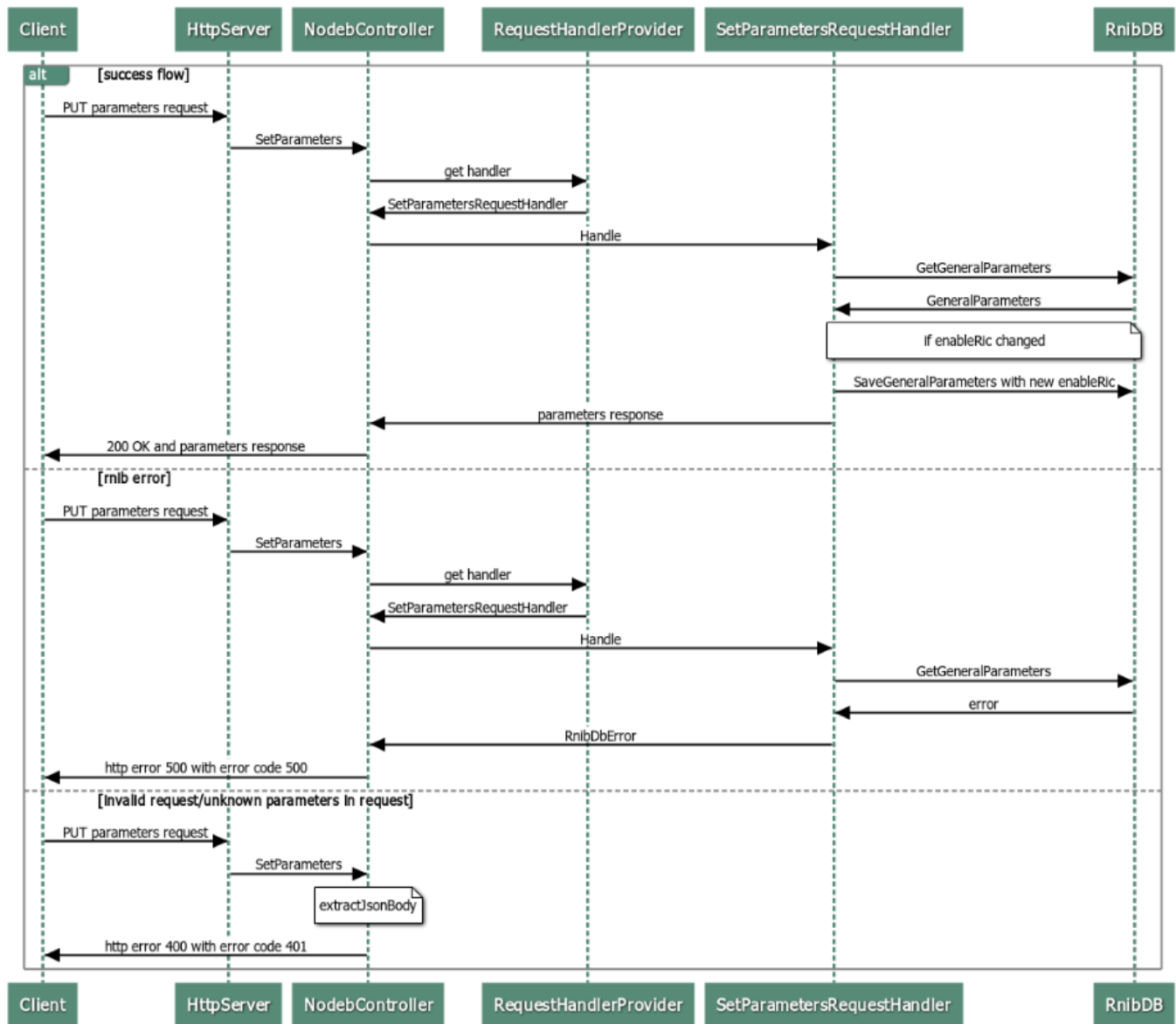
## Response Data Details

200 OK and response with incoming parameter.

## GeneralConfiguration in Redis

Key	Value
GENERAL	{ "enableRic": true }

## Set Parameters Flow



**F**

If enableRic is false incoming request should be rejected and setup failer request should be send.

Cause Group	Cause
Miscellaneous Cause	O&M Intervention

### Incoming Setup Request Flow

# Setup Request

