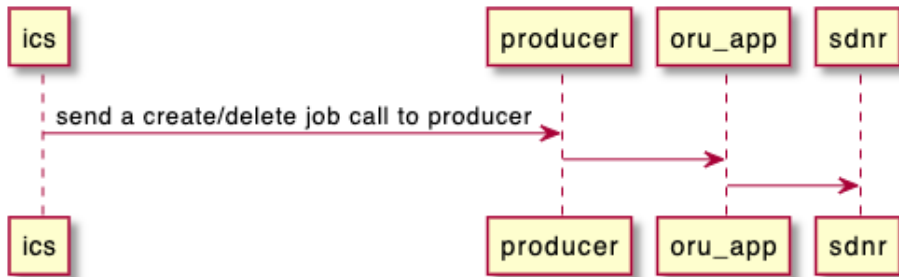


# Deploy ORU-App in docker env

This page is out of date.

Please see the relevant page for the latest release: e.g. [Release 1 - Run in Docker](#)

This is a brief instruction on how to deploy oru-app along with ics, producer, sdnr simulators, and check logs etc.



## Prerequisite

- *Docker*
- *make*
- *bash*
- *linux(ubuntu 18+)*

## Installation

copy nonrtric repo from oran gerrit

### clone nonrtric repo

```
git clone "https://gerrit.o-ran-sc.org/r/nonrtric"
```

go to sub-directory:

### go to subfolder

```
cd test/usecases/oruclosedlooprecovery/goversion/
```

run "*docker-compose up -d*" , this docker-compose file is to build all images needed and make all these components up & running:

### install oru-app, ics, producer, sdnr sims

```
docker-compose up -d
```

After successful run, we should see the docker containers up & running:

```

=> CACHED [build 2/4] WORKDIR /app
=> CACHED [build 3/4] COPY . ./
=> CACHED [build 4/4] RUN go build -o /producer ./stub/producer/
=> CACHED [stage-1 2/3] COPY --from=build /producer .
=> exporting to image
=> => exporting layers
=> => writing image sha256:a8e827c8e569e864101aebdd8bfc666b6e07588ca721262f213a0bdd968b5f41
=> => naming to docker.io/library/producer-sim

Use 'docker scan' to run Snyk tests against images to find vulnerabilities and learn how to fix them
[+] Building 1.6s (12/12) FINISHED
=> [internal] load build definition from Dockerfile-sdnr
=> => transferring dockerfile: 1.1kB
=> [internal] load .dockerignore
=> => transferring context: 2B
=> [internal] load metadata for gcr.io/distroless/base-debian10:latest
=> [internal] load metadata for docker.io/library/golang:1.17.1-bullseye
=> [build 1/4] FROM docker.io/library/golang:1.17.1-bullseye@sha256:a17096738ab2ef373b2bb8d3d6773cf7be88b90bca0a7da655e5816d211230f3
=> [stage-1 1/3] FROM gcr.io/distroless/base-debian10@sha256:d2ce069a83a6407e98c7e0844f4172565f439dab683157bf93b6de20c5b46155
=> [internal] load build context
=> => transferring context: 2.20kB
=> CACHED [build 2/4] WORKDIR /app
=> CACHED [build 3/4] COPY . ./
=> CACHED [build 4/4] RUN go build -o /sdnrstub ./stub/sdnr/
=> CACHED [stage-1 2/3] COPY --from=build /sdnrstub .
=> exporting to image
=> => exporting layers
=> => writing image sha256:ff7069f0b9c14c0fba7b2104d60f46f311e6723720d472b30af1c18fa77af65f
=> => naming to docker.io/library/sdnr-sim

Use 'docker scan' to run Snyk tests against images to find vulnerabilities and learn how to fix them
Creating network "nonrtric-docker-net" with driver "bridge"
Creating ics-sim ... done
Creating oru-app ... done
Creating producer-sim ... done
Creating sdnr-sim ... done

```

CONTAINER ID	IMAGE	COMMAND	CREATED	STATUS	PORTS	NAMES
850aa2a2bb57	producer-sim	"/producer"	About a minute ago	Up About a minute	0.0.0.0:8085->8085/tcp	producer-sim
692bc24ffe35	oru-app	"/docker-oruclosedlo..."	About a minute ago	Up About a minute	0.0.0.0:8086->8086/tcp	oru-app
db80ff266620	sdnr-sim	"/sdnrstub"	About a minute ago	Up About a minute	0.0.0.0:3904->3904/tcp	sdnr-sim
35d21c5644a8	ics-sim	"/ics"	About a minute ago	Up About a minute	0.0.0.0:8083->8083/tcp	ics-sim

## Trigger the job:

trigger the job

curl -X POST http://localhost:8086/admin/start -d ""

## Check logs on oru-app:

check logs

docker logs oru-app

We should be able to see a message like below:

```
time="2022-02-14T14:06:50Z" level=debug msg="Handling messages"
2022/02/14 14:06:50 [DEBUG] PUT http://sdnr-sim:3904/rests/data/network-topology:network-topology/topology=topology-netconf/node=0-DU-1122
2/radio-resource-management-policy-ratio=rrm-pol-1
time="2022-02-14T14:06:50Z" level=debug msg="Sent unlock message for 0-RU: ERICSSON-0-RU-11220 to 0-DU: 0-DU-1122."
time="2022-02-14T14:06:52Z" level=debug msg="Handling messages"
time="2022-02-14T14:06:52Z" level=debug msg="Cleared Link failure for 0-RU ID: ERICSSON-0-RU-11220"
time="2022-02-14T14:06:54Z" level=debug msg="Handling messages"
2022/02/14 14:06:54 [DEBUG] PUT http://sdnr-sim:3904/rests/data/network-topology:network-topology/topology=topology-netconf/node=0-DU-1122
2/radio-resource-management-policy-ratio=rrm-pol-1
time="2022-02-14T14:06:54Z" level=debug msg="Sent unlock message for 0-RU: ERICSSON-0-RU-11220 to 0-DU: 0-DU-1122."
time="2022-02-14T14:06:56Z" level=debug msg="Handling messages"
time="2022-02-14T14:06:56Z" level=debug msg="Cleared Link failure for 0-RU ID: ERICSSON-0-RU-11220"
time="2022-02-14T14:06:58Z" level=debug msg="Handling messages"
2022/02/14 14:06:58 [DEBUG] PUT http://sdnr-sim:3904/rests/data/network-topology:network-topology/topology=topology-netconf/node=0-DU-1122
2/radio-resource-management-policy-ratio=rrm-pol-1
time="2022-02-14T14:06:58Z" level=debug msg="Sent unlock message for 0-RU: ERICSSON-0-RU-11220 to 0-DU: 0-DU-1122."
time="2022-02-14T14:07:00Z" level=debug msg="Handling messages"
time="2022-02-14T14:07:00Z" level=debug msg="Cleared Link failure for 0-RU ID: ERICSSON-0-RU-11220"
time="2022-02-14T14:07:02Z" level=debug msg="Handling messages"
2022/02/14 14:07:02 [DEBUG] PUT http://sdnr-sim:3904/rests/data/network-topology:network-topology/topology=topology-netconf/node=0-DU-1122
2/radio-resource-management-policy-ratio=rrm-pol-1
time="2022-02-14T14:07:02Z" level=debug msg="Sent unlock message for 0-RU: ERICSSON-0-RU-11220 to 0-DU: 0-DU-1122."
time="2022-02-14T14:07:04Z" level=debug msg="Handling messages"
time="2022-02-14T14:07:04Z" level=debug msg="Cleared Link failure for 0-RU ID: ERICSSON-0-RU-11220"
time="2022-02-14T14:07:06Z" level=debug msg="Handling messages"
2022/02/14 14:07:06 [DEBUG] PUT http://sdnr-sim:3904/rests/data/network-topology:network-topology/topology=topology-netconf/node=0-DU-1122
2/radio-resource-management-policy-ratio=rrm-pol-1
time="2022-02-14T14:07:06Z" level=debug msg="Sent unlock message for 0-RU: ERICSSON-0-RU-11220 to 0-DU: 0-DU-1122."
time="2022-02-14T14:07:08Z" level=debug msg="Handling messages"
time="2022-02-14T14:07:08Z" level=debug msg="Cleared Link failure for 0-RU ID: ERICSSON-0-RU-11220"
time="2022-02-14T14:07:10Z" level=debug msg="Handling messages"
```

# Clean env

clean env

clean env
docker-compose down